

THE INFORMATION CONTAINED IN THIS DRAWING SHALL NOT BE REPRODUCED IN ANY FORM WITHOUT PERMISSION IN WRITING
FROM SOLARTRON METROLOGY LTD. © 2005

SOLARTRON METROLOGY LTD., STEYNING WAY, BOGNOR REGIS, SUSSEX, ENGLAND, PO22 9ST

TOLERANCES UNLESS OTHERWISE STATED
HOLE DIAMETERS SIZE TO PLUS.
DIMENSIONS IN mm

	Name	Signature	Date
Original Author	Refer to original EDCR		11/04/2005
Last Modified by	Pavel Kramorenko		16/02/2022
Approved by	Andrew Keal		13/10/2015

FOR EFFECTIVITY DATE REFER TO EDCR

6	22029	Description added
5	21851	Spring + Tip options added
4	19227	* Not for I100 & I150 now reads * I200 & I300
3	19154	* Not for I100 & I150 added
2	18974	Guided Core/Carrier + Spring + Tip(Not for S100 & S150) added to Retrofittable Accessories
1	18768	Configurator re-designed and raised to issue 1
G	18152	Change to option V – Guided Core/Carrier + Spring + Tip – not for S100 & S150
F	17171	Title Changed and layout clarified.
E	17154	Axial Connector removed.
D	17102	Terminology standardised.
C	16917	P and V added to Core/Carrier Type
B	16969	UPDATED
A	16969	NEW FORM
Issue	EDCR	Change Comments - for detailed information refer to EDCR.

Document summary:

Ordering Guide for 4-20mA S-Series

Document Types: WI, OP, FORM, PS, TS, ES

Title	Number
ORDERING GUIDE - 4-20mA S-SERIES	502675



Form No: 502675

ORDERING GUIDE - 4-20mA S-SERIES

I								
---	--	--	--	--	--	--	--	--

Total Measurement Range

x	x	x
---	---	---

x = mm

IP Rating

5	65
7	67

Core/Carrier Type

M	6.3 mm core- M4 x 0.7 thread
P	Guided Core/Carrier + Spring - M6 x 1.0 thread
S	Guided core/carrier - M6 x 1.0 thread
T	Free core + carrier
V	Guided Core/Carrier + Spring + Tip *
U	Guided core carrier with 6 mm Universal Joints * **

* Not for I200 & I300 without Solartron approval

** Not available with Axial Connector

Output Range

A	4-20 mA
B	20-4 mA

Electrical Connections

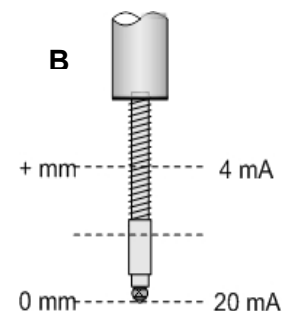
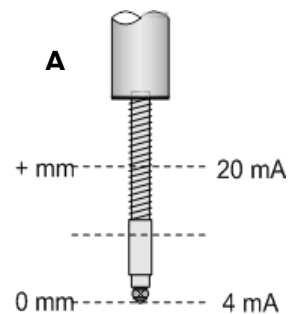
N	Cable only
D	Din Plug 3 way 180° screw lock
L	Axial connector with mating half *

* Not available with Universal Joints

Cable Length

X	X = cable length in metres *
0	If no cable required with Axial connector

* Solartron approval required for more than 10 metres



Product Description _____

See overleaf for Accessories, Springs and Ball Tips

Retrofittable Accessories

(Not suitable for I100 and I150)

Ball Tip Adapter with Ball Tip	Part number
	805192-SX

Springs

	Part number
±2.5 mm	208739/0025
±5 mm	208739/0050
±7.5 mm	208739/0075
±10 mm	208739/0100
±15 mm	208739/0150
±25 mm	208739/0250
±50 mm	208739/0500
±75 mm	208739/0750
±100 mm	Guided Core/Carrier + Spring + Tip (Not for I100 & I150)
±150 mm	208739/1500

Measuring range (total travel mm)	5	10	15	20	30	50	100	150	200	300	S IP 65	S IP 67	SR Submersible	SR IP 68	Axial Connector	LVDT	DC	Orbit	4-20mA	Screw Mount	High Temp*
Mechanical	Axial connector	●	●	●	●	●	●	●	●	●	●	●	●	●	●	●	●	●	●	●	●
	Free Core	●	●	●	●	●	●	●	●	●	●	●	●	●	●	●	●	●	●	●	●
	Guided core	●	●	●	●	●	●	●	●	●	●	●	●	●	●	●	●	●	●	●	●
	Screw Mount	●	●	●	●	●	●	●	●	●	●	●	●	●	●	●	●	●	●	●	●
Display/Controller	High Temp.	●	●	●	●	●	●	●	●	●	●	●	●	●	●	●	●	●	●	●	●
	SI 1000	●	●	●	●	●	●	●	●	●	●	●	●	●	●	●	●	●	●	●	●
	SI 3000	●	●	●	●	●	●	●	●	●	●	●	●	●	●	●	●	●	●	●	●
	SI 7000	●	●	●	●	●	●	●	●	●	●	●	●	●	●	●	●	●	●	●	●
Remote signal conditioning	DRC	●	●	●	●	●	●	●	●	●	●	●	●	●	●	●	●	●	●	●	●
	OD 2	●	●	●	●	●	●	●	●	●	●	●	●	●	●	●	●	●	●	●	●
	OD 4	●	●	●	●	●	●	●	●	●	●	●	●	●	●	●	●	●	●	●	●
	OD 5	●	●	●	●	●	●	●	●	●	●	●	●	●	●	●	●	●	●	●	●
	BICM (15.0-15V)	●	●	●	●	●	●	●	●	●	●	●	●	●	●	●	●	●	●	●	●
	BICM (24V)	●	●	●	●	●	●	●	●	●	●	●	●	●	●	●	●	●	●	●	●
TTL module	Orbit	●	●	●	●	●	●	●	●	●	●	●	●	●	●	●	●	●	●	●	●
	Orbit	●	●	●	●	●	●	●	●	●	●	●	●	●	●	●	●	●	●	●	●

●	Compatible
▲	Refer to Engineering
■	Not Available

Note: High Temperature
is for Transducers only